

Version History

of

“Acer Bio-Protection AAA 6.0”

Version 6.0.00.21

I. Overview

This Version History contains all update information for each release version. You may know the differences among all versions of Acer Bio-Protection AAA v6.0.

For each version, you may see different supportable sensor. This version history will show the changes in both the functional sides as well as any technical changes.

II. Version History

[6.0.00.21]

1. The following fingerprint sensors are supported:

Product Name	Product ID	Sensor	Controller	SDK Ver.	Comment
Acer Bio-Protection AAA	11960	AuthenTec AES 1610	-	Driver: 7.10.1.2	(b0042)

2. Issues resolved

- (1) Domain account issue
- (2) Performance
- (3) Acer logo wording error
- (4) MSN 9.0 support

[6.0.00.20]

3. The following fingerprint sensors are supported:

Product Name	Product ID	Sensor	Controller	SDK Ver.	Comment
Acer Bio-Protection AAA	11960	AuthenTec AES 1610	-	Driver: 7.10.1.2	(b0041)

4. Issues resolved

- (1) Domain account issue

[6.0.00.19]

5. The following fingerprint sensors are supported:

Product Name	Product ID	Sensor	Controller	SDK Ver.	Comment
Acer Bio-Protection	11960	AuthenTec	-	Driver:	(b0035)

AAA		AES 1610		7.10.1.2	
-----	--	----------	--	----------	--

6. Issues resolved

- (1) BP6 get BIOS version string now but OEM designed NB to get both BIOS and system manufacture name.

[6.0.00.18]

7. The following fingerprint sensors are supported:

Product Name	Product ID	Sensor	Controller	SDK Ver.	Comment
Acer Bio-Protection AAA	11960	AuthenTec AES 1610	-	Driver: 7.10.1.2	-

8. Use Install Shell to meet Microsoft OEM Ready Program

9. Issues resolved

- (1) BP6 get BIOS version string now but OEM designed NB to gat Manufacture Name
- (2) System will be blocked in Nav mode after resume from S3

[6.0.00.17]

10. The following fingerprint sensors are supported:

Product Name	Product ID	Sensor	Controller	SDK Ver.	Comment
Acer Bio-Protection AAA	11960	AuthenTec AES 1610	-	Driver: 7.10.1.2	-

11. Update the AuthenTec SDK for silent installation issue. After finishing the driver installation, setup.exe will not execute app installation.

12. Update Alpha driver for the DVD reject button (hardware) will cause issue, in XP.

[6.0.00.16]

13. The following fingerprint sensors are supported:

Product Name	Product ID	Sensor	Controller	SDK Ver.	Comment
Acer Bio-Protection AAA	11960	AuthenTec AES 1610	-	Driver: 7.10.1.2	-

N/A

[6.0.00.15]

14. The following fingerprint sensors are supported:

Product Name	Product ID	Sensor	Controller	SDK Ver.	Comment
Acer Bio-Protection AAA	11960	AuthenTec AES 1610	-	Driver: 7.10.1.2	-

15. Localized button, GUI, tutorial and help for JP market.

[6.0.00.14]

N/A

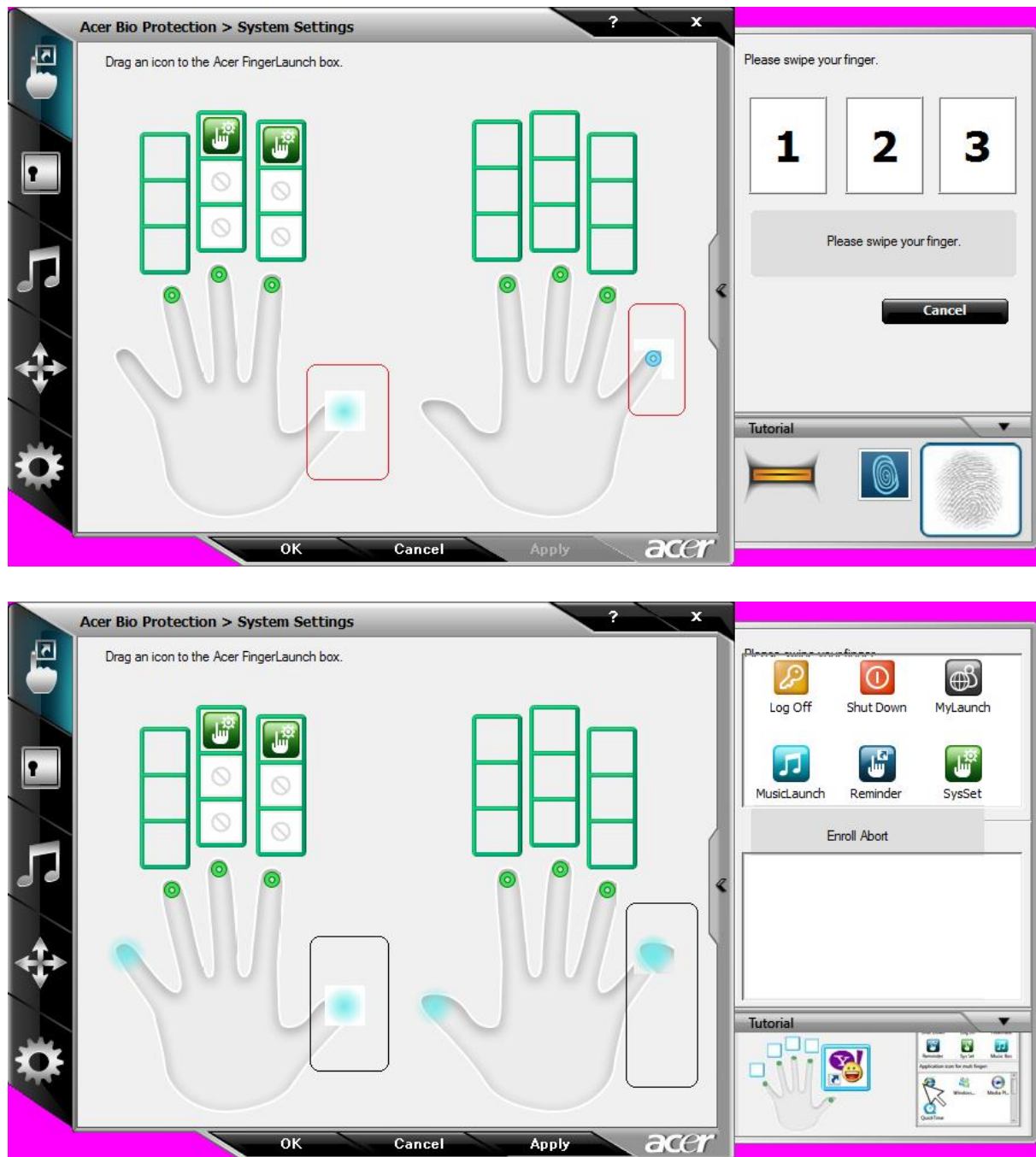
[6.0.00.13]

16. The following fingerprint sensors are supported:

Product Name	Product ID	Sensor	Controller	SDK Ver.	Comment
Acer Bio-Protection AAA	11960	AuthenTec AES 1610	-	Driver: 7.10	-

17. To fix 2kv ESD fail in enrollment.

18. To adjust the UI issues.



[6.0.00.12]

1. The following fingerprint sensors are supported:

Product Name	Product ID	Sensor	Controller	SDK Ver.	Comment
Acer	11960	AuthenTec	-	Driver: 7.10	-

Bio-Protection AAA		AES 1610			
-----------------------	--	----------	--	--	--

2. Randomly, ptdwzd.exe will stop working in long run testing.
3. User renames his/her account name from control panel, our app in Windows logon pop-up menu won't be synced.
4. Frequently, switch Nav/FL mode via hotkey, the behavior will cause System Settings could not be opened.
5. In En OS, My music could not play the music in Chinese folder name.

[6.0.00.11]

1. The following fingerprint sensors are supported:

Product Name	Product ID	Sensor	Controller	SDK Ver.	Comment
Acer Bio-Protection AAA	11960	AuthenTec AES 1610	-	Driver: 7.10	-

2. Fix: User could not find the item which be added into My Favorites of Acer MyLaunch.
3. Fix: After OOBE(Out-of-Box-Experience) or long-run, ComPtcVUI.exe will fail and show an access violation message.

[6.0.00.10]

1. The following fingerprint sensors are supported:

Product Name	Product ID	Sensor	Controller	SDK Ver	Comment
Acer Bio-Protection AAA	11960	AuthenTec AES 1610	-	Driver: 7.10	-

2. After ESD, user can continue carrying on movements before ESD.
3. Fix: Duplicate fingerprint sometimes could be successfully enrolled.

4. Fix: In the FingerNave mode, the scroll horizontal is not supported Adobe Reader 7.0.
5. Fix: If users remove the windows password by windows control panel, Bio Protection does not synchronize the empty password.
6. Fix: If user edit account name by windows control panel, the authentication of Bio Protection does not synchronize.

[6.0.00.09]

1. The following fingerprint sensors are supported:

Product Name	Product ID	Sensor	Controller	SDK Ver.	Comment
Acer Bio-Protection AAA	11960	AuthenTec AES 1610	-	Driver: 7.10	-

2. Fix: Sometimes user can't swipe finger to login Windows.
3. Fix: Hotkey settings: sometimes hotkey will be Ctrl/Alt + F5 will be changed to Ctrl/Alt + F8 automatically
4. Fix: Sometimes system can't execute some function items of Acer Bio Protection some items for Tray menu.
5. Fix: When user is enrolling finger in System settings, after several minutes, the Bio-Protection will crash down.
6. Fix: In 64 bit machine, open two System Settings by FingerLaunch, just one had been open, but have two System Settings in Task Manager.
7. Fix: Intranet can't be added in profile launch area.
8. Fix: The windows can't be allowed empty password.
9. Fix: Un-check "Enable icon in system tray" item in General Settings, but the tray icon still show in the system tray.
10. Fix: Sometimes when user enrolls finish, the Tutorial bar in the slide form of System settings will disappear.
11. Fix: Restore will make the Password Bank data and Profile Launch area item can't synchronize.
12. Fix: Online help can't link to the right page.
13. Modify Navigation sensitivity.

[6.0.00.08]

1. The following fingerprint sensors are supported:

Product Name	Product ID	Sensor	Controller	SDK Ver.	Comment
Acer Bio-Protection AAA	11960	AuthenTec AES 1610	-	Driver: 7.10	-

2. Fix: Sometime can not use FingerLaunc function, but if user executive authentication windows (ex: open System Settings), then the function can be used.
3. Fix: After eDataSecurity first time setting, open PSD from eDataSecurity Explorer Toolbar or eDataSecurity Management console, the Master password not initialized.
4. Fix: After edit the Windows password in Control Panel, Bio Protection can not synchronize the new password.
5. Fix: If the music file/folder name is Chinese, MusicLaunch can not support it.
6. Fix: Disable FP sound effect, but you still can hear the “Beeep” sound while enrolling a new finger in system setting.
7. Fix: FingerLaunch success, but the FingerLaunch UI on top left corner has green circle missing
8. Fix: Sometimes login screen shows CompPtcVUI.exe Resource 186 not found
9. Fix: Authentication UI shows garbage: Resource 163 not found
10. Fix: If sensor get bad quality image, software can't show correct message in Finger Enrollment page of System Settings.
11. Fix: The wrong spell: “swip” should be “swipe”.

[6.0.00.07]

1. The following fingerprint sensors are supported:

Product Name	Product ID	Sensor	Controller	SDK Ver.	Comment
Acer Bio-Protection AAA	11960	AuthenTec AES 1610	-	Driver: 7.10	-

2. Fix the UI issue: lose Acer logo in About page.
3. Fix: If users enroll fail after two times, Bio Protection will show the wrong message.

4. Fix: After enroll finger in System Settings, select the finger not enroll again fast, the sensor will fail.
5. Fix: Drag shortcut into Quick Launch Area, sometime the shortcut image will be hided.
6. Fix: the flash on the left function button not smooth enough.
7. Modify new tutorial and demo flash in Bio-Protection.

[6.0.00.06]

1. The following fingerprint sensors are supported:

Product Name	Product ID	Sensor	Controller	SDK Ver.	Comment
Acer Bio-Protection AAA	11960	AuthenTec AES 1610	-	Driver: 7.10	-

2. Fix: The “My Favorites” of MyLaunch also show in the “My Favorites” of normal IE.
3. Fix: The finger(s) not enroll doesn’t flash blue light.
4. UI modification: MyLaunch, MusicLaunch, Finger Nav and General setting in System Settings.
5. Fix dialog windows style does not accord with the demand.
6. Fix Acer FingerLaunch can not open 3 Web/Application that had save ID and password in Password Bank at a stretch.
7. Fix: sometime can not logon with fingerprint after sleep mode.
8. Fix: After logon, the sensor status message from tray icon can not disappear automatically.
9. Fix the problem: Delete the file that ever be assigned to FingerLaunch, Bio Protection will show the error message and can not close.
10. Fix: MyLaunch and System settings can open in the same time.
11. Fix: Password Bank can not save the ID/Password in MyLaunch
12. Fix: Every time when user opens MyLaunch, OS will show User Account Control window, and need to wait 30 seconds to open MyLaunch again.
13. Fix: After un-installate Acer Bio-Protercion, can not clean MyLaunch data.
14. Fix: User sets the hotkey combination in FingerNav Magagement page of System Settings. Open FingerNav Management again, the combination will be change.
15. Log off, Sleep, Hibernate, Shut down should close System settings, or the sensor limits will have problem.
16. Fix: MyLaunch can not use FingerNav.

17. Fix: Two or more accounts in same machine, if user switch to another user, the FingerLaunch will fail.
18. (64bit) Fix: Open System Setting by FingerLaunch then close it, sometime can not user FingerLaunch.
19. Fix: User can dray System Settings shortcut from Start menu to the box over the finger in FingerLaunch again and again.
20. Fix: Modify the Windows password in Windows Logon page, the password will show the clear text.

[6.0.00.02]

1. The following fingerprint sensors are supported:

Product Name	Product ID	Sensor	Controller	SDK Ver.	Comment
Acer Bio-Protection AAA	11960	AuthenTec AES 1610	-	Driver: 7.10	-

2. Fix the problem that the FingerLaunch behavior pulled is not intact.
3. Carrying out One button installation for the 1st time in the brand-new environment, the following state will appear : Put Driver time long, and the picture disappeared after putting into half, have not jumped out install picture either, only jump out "The program might not have installed correctly " message.
4. UI of Finger Enrollment needs to adjust
5. Be allowed to delete the last fingerprint

[6.0.00.00]

1. The following fingerprint sensors are supported:

Product Name	Product ID	Sensor	Controller	SDK Ver.	Comment
Acer Bio-Protection AAA	11960	AuthenTec AES 1610	-	Driver: 2007.1017.2316.49	-

2. OS : Vista SP1 32/64 bit
3. Language : English, Traditional Chinese, Simple Chinese, French, German, Italian, Spanish, Portuguese, Dutch, Danish, Swedish, Czech, Turkish,

Polish, Norwegian, Finnish, Greek, Russian, Hungarian, Japanese

4. Function :

- Fingerprint Enrollment
- FingerLaunch
- Password Bank
- Password Bank Back/Restore
- Windows Logon
- Privacy
- Music Box
- Navigation
- Sensor always listen
- General setting

5. New GUI